

COST-EFFECTIVE AUTOMATION

COMPACT UNITS FOR:

- DRILLING
- TAPPING
- MILLING

www.e2systems.com

PNEUMATIC
DRILLING UNIT
BE 22 SK
AND
BEP 22 SK



PNEUMATIC DRILLING UNIT BE 22 SK

The BE 22 SK consists of an air motor, a gear box and a body. The design is compact as well as robust. BE 22 SK comes in a wide range of speeds, and is available for lubrication-free operation.

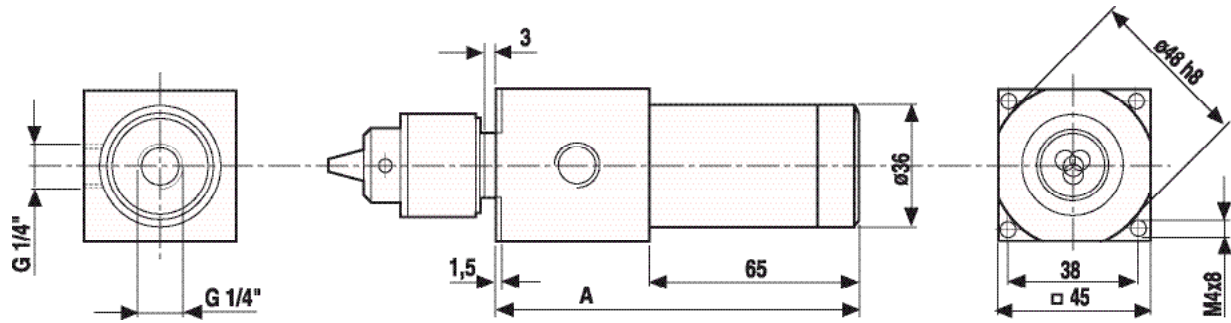
- STURDY AND COMPACT DESIGN
- WIDE RANGE OF RPMs
- DIRECTED EXHAUST
- CHUCK ALTERNATIVES UP TO Ø20 MM
- IS AVAILABLE IN COUNTER CLOCKWISE ROTATION



Guidelines for choice of unit													[Ø, mm]
DRILLING UNIT		CAPACITY IN STEEL				CAPACITY IN ALUMINIUM/BRASS				CAPACITY IN WOOD/PLASTICS			
No of Spindles		1	2	3	4	1	2	3	4	1	2	3	4
LOW SPEED	BE 225 SK	8	6	5	4	12	9	8	7	22	11	9	8
	BE 228 SK	8	5	5	4	12	9	8	7	20	11	9	7
	BE 2211 SK	6	4	4	4	10	8	7	6	16	11	9	7
HIGH SPEED	BE 2222 SK	6	3	3	3	9	7	6	5	14	9	8	6
	BE 2236 SK	5	2.5	2.5	2	8	6	6	5	12	8	7	5
	BE 2249 SK	4	1.5	1.5	1.5	6	5	5	4	10	6	6	4
	BE 22220 SK	2				3				4			

Performance specifications at 6.3 Bar			
Power	0.25 kW	Run-out at spindle nose (max.)	0.03 mm
Min. Center to Center Spacing		Working pressure range	6–7 Bar
Single Spindle	45 mm	Air consumption	<0.3 Nm ³ /min
Double-Spindle Head	11 mm	Sound level	70 dB(A)

DRILLING UNIT	SPEED (IDLE)	[RPM]	SPEED (AT MAX OUTPUT)	[RPM]	TORQUE (AT MAX OUTPUT)	[NM]
LOW SPEED	BE 225 SK	500	250	9.9		
	BE 228 SK	800	400	6.0		
	BE 2211 SK	1 100	550	4.3		
HIGH SPEED	BE 2222 SK	2 200	1 100	2.4		
	BE 2236 SK	3 600	1 800	1.5		
	BE 2249 SK	4 900	2 450	1.1		
	BE 22220 SK	22 000	11 000	0.25		




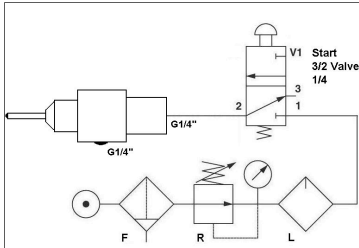
You can download 2D CAD-drawings and 3D CAD-models on www.e2systems.com.

DRILLING UNIT		A	[MM]	WEIGHT	[KG]
LOW SPEED	BE 225 SK	141		1.5	
	BE 228 SK				
	BE 2211 SK				
HIGH SPEED	BE 2222 SK	109		0.9	
	BE 2236 SK				
	BE 2249 SK				
	BE 22220 SK				

Necessary components

CHUCKS	TYPE	PAGE
	Key chucks Ø 0.5-6.5 mm (Standard chuck) Ø 0.8-10.0 mm	50
	Collet Chucks Ø 1.0-8.0 mm Ø 1.0-15.0 mm Ø 2.0-20.0 mm	51
COLLETS	TYPE	PAGE
	ER11 Ø 1.0-8.0 mm ER20 Ø 1.0-15.0 mm ER32 Ø 2.0-20.0 mm	51

Accessories

MULTI-SPINDLE HEADS	TYPE	PAGE
	Adjustable heads VH04-, VH06- and MBK 6V-series	42 46
CONTROLS	TYPE	PAGE
	Controls for BE SK-units	54

On www.e2system.com you can find more information as well as the same information as above in imperial units.

When requesting a quote or ordering please state: **Model, Chuck (collet size), and if it is to be used in Lubrication-free operation and/or CCW-rotation.**

PNEUMATIC PRECISION DRILLING UNIT BEP 22 SK

The BEP 22 SK is a precision drilling unit, equipped with a precision chuck. Thanks to separate and double ball bearings run-out amounts to a maximum of 0.01 mm. Its design is compact as well as robust. The BEP 22 SK comes in a wide range of speeds, and is available for lubrication-free operation.

- HIGH PRECISION
- STURDY AND COMPACT DESIGN
- WIDE RANGE OF RPM:s
- DIRECTED EXHAUST



Guidelines for choice of unit

[Ø, mm]

DRILLING UNIT	CAPACITY IN STEEL	CAPACITY IN ALUMINIUM/BRASS	CAPACITY IN WOOD/PLASTICS
BEP 2222 SK	6	9	14
BEP 2236 SK	5	8	12
BEP 2249 SK	4	6	10
BEP 22220 SK	2	3	4

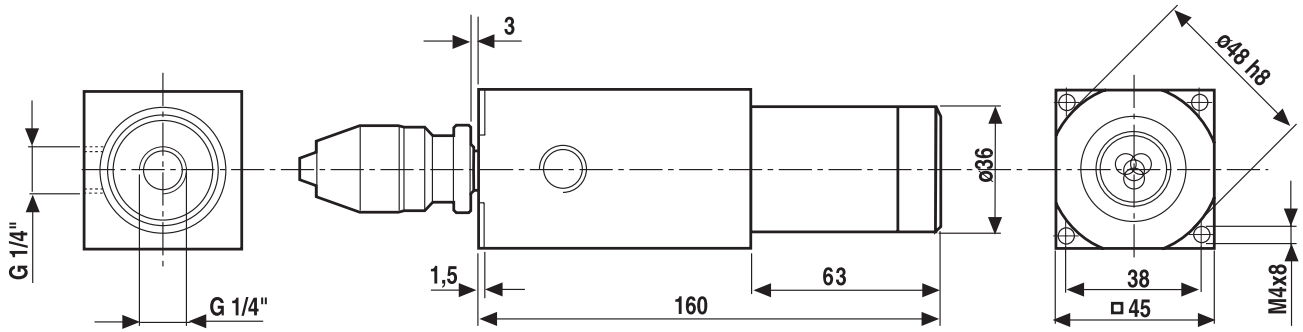
Performance specifications at 6.3 Bar

Power	0.25 kW	Run-out at spindle nose (max.)	0.01 mm	Air consumption	<0.3 Nm ³ /min
Min. CC Spindle Spacing	45 mm	Working pressure range	6–7 Bar	Sound level	70 dB(A)

DRILLING UNIT	SPEED (IDLE)	[RPM]	SPEED (AT MAX OUTPUT)	[RPM]	TORQUE (AT MAX OUTPUT)	[NM]
BEP 2222 SK	2 200		1 100		2.4	
BEP 2236 SK	3 600		1 800		1.5	
BEP 2249 SK	4 900		2 450		1.1	
BEP 22220 SK	22 000		11 000		0.25	

Dimensions




[mm]



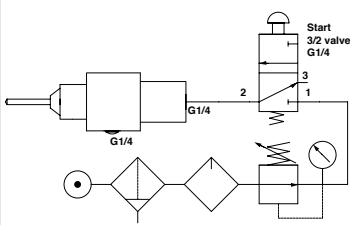
You can download 2D CAD-drawings and 3D CAD-models on www.e2systems.com.

WEIGHT 1.7 KG

Necessary components

CHUCKS	TYPE	PAGE
	Precision chucks Ø 0–3.0 mm Ø 0–5.0 mm (Standard chuck) Ø 0–8.0 mm	51
	Precision Collet Chuck ER 11 Ø 0.5–8.0 mm	51
COLLETS	TYPE	PAGE
	ER 11 Ø 0.5–8.0 mm	51

Accessories

CONTROLS	TYPE	PAGE
	Controls for BEP SK-units	54

On www.e2system.com you can find more information as well as the same information as above in imperial units.

When requesting a quote or ordering please state: **Model, Chuck (collet size) and if it is to be used in Lubrication-free operation.**

You will find units for Drilling, Tapping and Milling installed wherever increased rates of production are required. They are a cost-effective means of automating drilling, tapping and milling operations.

E2 products are known world wide for their quality, durability, precision and power. Each series of E2 units are the most compact in the market today.

E2 customers benefit from the high quality of the E2 product line with less down-time and reduced operating costs. The compact design of the E2 units together with a good availability of CAD-drawings/-models makes the design of a machine more straight forward.

E2's concern for the worker and his environment is evident in all E2 products. Low noise levels and non-lubrication features eliminating oil mist in the air is a common feature of the E2 product line.

E2 self-feeding units utilizes a built-in hydraulic feed control system. They combine precision with power enabling a high level of precision also in multi-spindle head applications. The extremely compact Air hydraulic drilling units and Lead screw tappers are ideal for drilling/tapping smaller holes. E2's electro-pneumatic and –hydraulic units can to be used when more power is required. You will still have the E2 durability and precision. The E2 product line also includes non-feed pneumatic units perfect for drilling as well as milling, slitting and grinding.

Complementing the line of units, E2 also offers a full line of accessories for machining applications.

E2 also have supplementary product lines of

- Rotary actuators
- Air thrusters
- Pneumatic/Hydraulic components and systems

E2 Systems AB, Strömslundsgatan 3, SE-507 62 Borås, Sweden

Tel: +46 33 20 88 40 , Fax: +46 33 20 88 49

www.e2systems.com