

COST-EFFECTIVE AUTOMATION

COMPACT UNITS FOR

- DRILLING
- TAPPING
- MILLING

www.ezsystems.com

PNEUMATIC MILLING UNITS
BE 22 SKM AND BE 33 SKM



PNEUMATIC MILLING UNITS BE 22 SKM AND BE 33 SKM

The BE 22/33 SKM consists of an air motor, a gear box and a robust body. The design is compact as well as robust. BE 22/33 SKM comes in a wide range of speeds, and is available for lubrication-free operation.

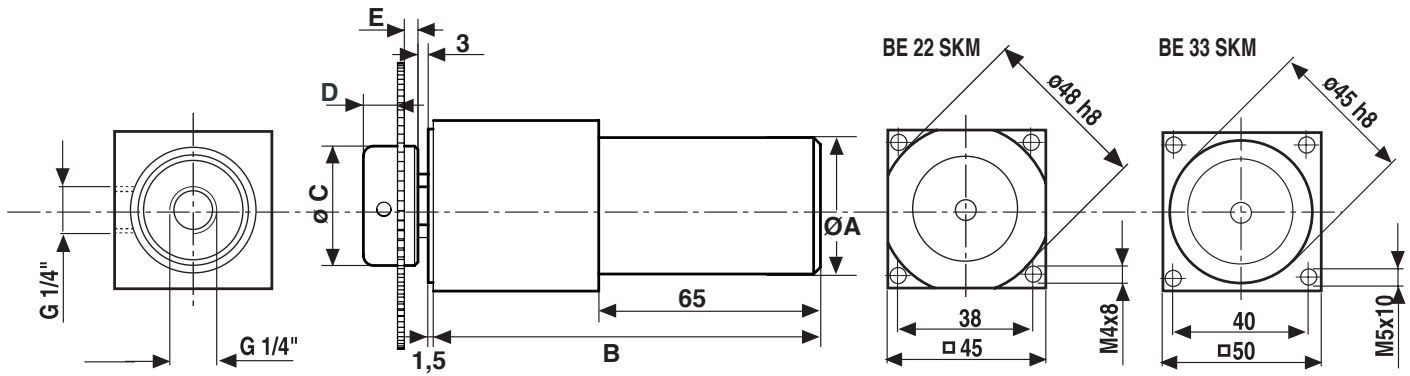
- STURDY AND COMPACT DESIGN
- WIDE RANGE OF RPMs
- DIRECTED EXHAUST



Guidelines for choice of unit				[mm]
MILLING UNIT	TOOL	CAPACITY IN STEEL	CAPACITY IN ALUMINUM/BRASS	CAPACITY IN WOOD/PLASTIC
BE 22 SKM	Saw ø	–	100	100
	Blade gauge	–	2	4
BE 33 SKM	Saw ø	80	100	100
	Blade gauge	1.5	4	6
BE 22 SKM	End mill ø	4	6	10
	Cutting depth	2	2	4
BE 33 SKM	End mill ø	6	10	25
	Cutting depth	2	4	6

Performance specifications at 6.3 Bar				
Power BE 22 SKM	0.25 kW	Air consumption BE 22 SKM <0.3 Nm ³ /min	Working pressure range	6–7 Bar
BE 33 SKM	0.36 kW	BE 33 SKM <0.5 Nm ³ /min	Sound level	70 dB(A)




MILLING UNIT	SPEED (IDLE)	[RPM]	SPEED (AT MAX OUTPUT)	[RPM]	TORQUE (AT MAX OUTPUT)	[NM]
LOW SPEED	BE 225 SKM	500	250	9.9		
	BE 228 SKM	800	400	6.0		
	BE 2211 SKM	1 100	550	4.3		
HIGH SPEED	BE 2222 SKM	2 200	1 100	2.4		
	BE 2236 SKM	3 600	1 800	1.5		
	BE 2249 SKM	4 900	2 450	1.1		
	BE 22220 SKM	22 000	11 000	0.25		
LOW SPEED	BE 335 SKM	500	250	12.6		
	BE 337 SKM	700	350	10.4		
	BE 3313 SKM	1 300	650	5.7		
HIGH SPEED	BE 3326 SKM	2 600	1 300	2.9		
	BE 3333 SKM	3 300	1 650	2.3		
	BE 3360 SKM	6 000	3 000	1.3		
	BE 33210 SKM	21 000	10 500	0.37		



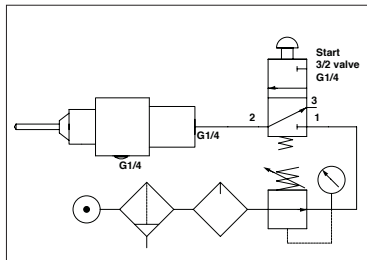
You can download 2D CAD-drawings and 3D CAD-models on www.e2systems.com.

MILLING UNIT	SPEED	ØA	B	WEIGHT [KG]	BORE	ØC	D	E
BE 22 SKM	Low	36	141	1.5	Ø 16	35	10	4
	High	36	109	0.9		40	8	5
BE 33 SKM	Low	40	149	2.0	Ø 22	50	12	5
	High	40	115	1.4		Ø 32		

Necessary components

TOOL HOLDERS	TYPE	PAGE
	Nuts For Ø 16 mm, Ø 22 mm and Ø 32 mm bore	
	Collet Chucks Ø 1.0–10.0 mm Ø 3.0–20.0 mm	51
COLLETS	TYPE	PAGE
	DA 200 Ø 1.0–10.0 mm DA 180 Ø 3.0–20.0 mm	51

Accessories

CONTROLS	TYPE	PAGE
	Controls for BE SKM-units	54

On www.e2system.com you can find more information as well as the same information as above in imperial units.

When requesting a quote or ordering, please state: **Model, Chuck (collet size) or Nut size**, and if it is to be used in **Lubrication-free operation and/or CCW-rotation**.

You will find units for Drilling, Tapping and Milling installed wherever increased rates of production are required. They are a cost-effective means of automating drilling, tapping and milling operations.

E2 products are known world wide for their quality, durability, precision and power. Each series of E2 units are the most compact in the market today.

E2 customers benefit from the high quality of the E2 product line with less down-time and reduced operating costs. The compact design of the E2 units together with a good availability of CAD-drawings/-models makes the design of a machine more straight forward.

E2's concern for the worker and his environment is evident in all E2 products. Low noise levels and non-lubrication features eliminating oil mist in the air is a common feature of the E2 product line.

E2 self-feeding units utilizes a built-in hydraulic feed control system. They combine precision with power enabling a high level of precision also in multi-spindle head applications. The extremely compact Air hydraulic drilling units and Lead screw tappers are ideal for drilling/tapping smaller holes. E2's electro-pneumatic and –hydraulic units can to be used when more power is required. You will still have the E2 durability and precision. The E2 product line also includes non-feed pneumatic units perfect for drilling as well as milling, slitting and grinding.

Complementing the line of units, E2 also offers a full line of accessories for machining applications.

E2 also have supplementary product lines of

- Rotary actuators
- Air thrusters
- Pneumatic/Hydraulic components and systems

E2 Systems AB, Strömslundsgatan 3, SE-507 62 Borås, Sweden

Tel: +46 33 20 88 40 , Fax: +46 33 20 88 49

www.e2systems.com