

MULTI-SPINDLE HEADS

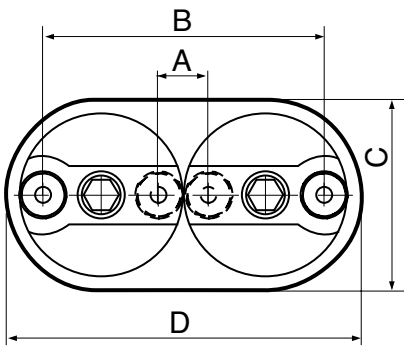
DIMENSIONS FOR E2 MULTI-SPINDLE HEADS

This first section, with information on E2's range of multi-spindle heads, is followed by a section showing specifications of feasible head and unit combinations for drilling and tapping. Other combinations are possible for special applications like counter-sinking, reaming, etc, as well as heads with fixed spindles in patterns according to customer specification. Please contact E2 for further information.

The collets needed for the tool holders on E2's multi-spindle heads are described in more detail in Tool Holders (page 51).



2-SPINDLE HEADS



Specifications

MODEL	MAX CAPACITY IN STEEL		COLLETS FOR MAX Ø	COLLET TYPE	MAX SPEED	WEIGHT EXCL. ADAPTOR
	DRILLING Ø	TAPPING				
	[mm]	[M-threads]	[mm]		[rpm]	[kg]
MBKV-402 *	4	M3	4	44	5 000	1.80
VH 042P	5	M3	5	ER8	4 000	0.95
MBK-6V2	6	M5	6.3	60-62	5 000	0.90
MBKV-602	6	M5	6.3	60-62	4 000	3.00
VH 062P	7	M5	8	ER11	4 000	1.65
MBKV-802	8	M6	8.5	80-82	4 000	3.90
VH 082P	10	M6	12	ER16	4 000	2.20
MBKV-1002	10	M8	12	ER16	4 000	3.70
VH 102P	12	M8	12	ER16	3 500	3.50
MBKV-1302	13	M10	14	130-132	2 500	6.40
MBKV-1402	13	M10	-	TR16	2 500	6.50
VH 132P	14	M12	15	ER20	3 000	5.30
VH 182P	16	M14	16	ER25	2 500	8.30

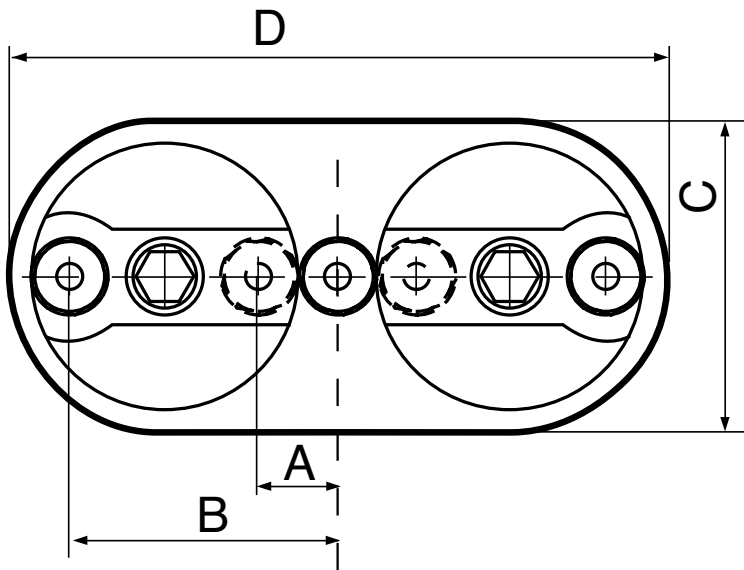
* Gear ratio 1:2. All others 1:1

Dimensions

[mm]

MODEL	DIMENSIONS			
	A MIN SPINDLE SPACING	B MAX SPINDLE SPACING	C SHORTER SIDE	D LONGER SIDE
MBKV-402 *	11	83	60	114
VH 042P	12	72	49	91
MBK-6V2	14	64	52	82
MBKV-602	18	110	84	145
VH 062P	17	93	65	120
MBKV-802	22	122	90	160
VH 082P	24	108	75	141
MBKV-1002	21	120	100	160
VH 102P	28	120	83	157
MBKV-1302	32	144	105	196
MBKV-1402	32	144	105	196
VH 132P	35	151	102	195
VH 182D	41	173	122	229

3-SPINDLE HEADS (centre spindle fixed)



Specifications

MODEL	MAX CAPACITY IN STEEL		COLLETS FOR MAX Ø	COLLET TYPE	MAX SPEED	WEIGHT EXCL. ADAPTOR
	DRILLING Ø	TAPPING				
	[mm]	[M-threads]	[mm]		[rpm]	[kg]
VH 043LP	5	M3	5	ER8	4 000	1.05
MBK-6VR3	6	M5	6.3	60-62	5 000	1.40
MBKVR-603	6	M5	6.3	60-62	4 000	3.70
VH 063LP	7	M5	8	ER11	4 000	1.95
MBKVR-803	8	M6	8.5	80-82	4 000	4.70
VH 083LP	10	M6	12	ER16	4 000	2.90
VH 103LP	12	M8	12	ER16	3 500	4.90
MBKVR-1303	13	M10	14	130-132	2 500	7.40
MBKVR-1403	13	M10	-	TR16	2 500	7.60
VH 133LP	14	M12	15	ER20	3 000	7.20
VH 183LP	16	M14	16	ER25	2 500	10.75

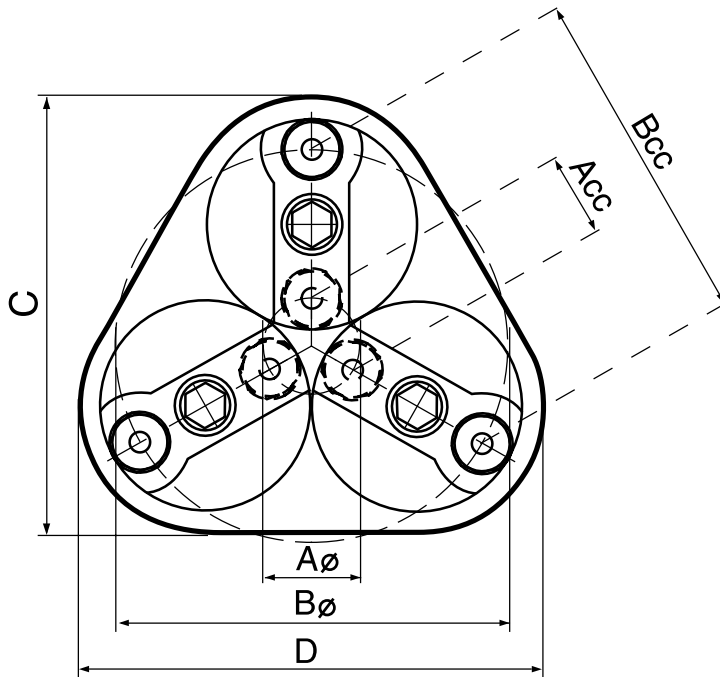
Dimensions

[mm]

MODEL	A MIN SPINDLE SPACING	B MAX SPINDLE SPACING	C SHORTER SIDE	D LONGER SIDE
VH 043LP	12	42	49	103
MBK-6VR3	17	42.2	∅104	
MBKVR 603	20	66	85	170
VH 063LP	17.5	55.5	65	138
MBKVR 803	23.5	73.5	90	190
VH 083LP	24	66	75	165
VH 103LP	28	74	87	189
MBKVR 1303	31	87	105	225
MBKVR-1403	31	87	105	225
VH 133LP	35	93	102	230
VH 183LD	41	107	122	270

On www.e2systems.com you can find more information as well as the same information as above in imperial units. When requesting a quote or ordering, please state: **Model and Collet size.**

3-SPINDLE HEADS



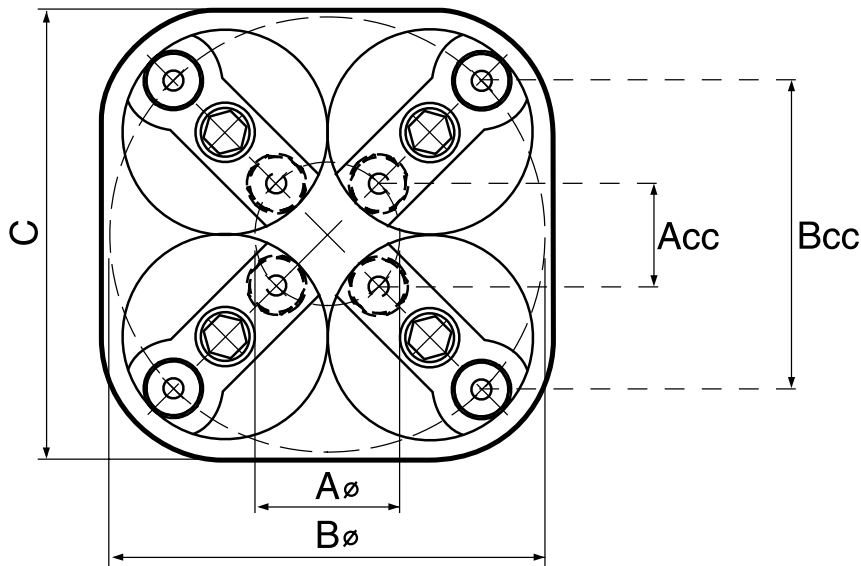
Specifications

MODEL	MAX CAPACITY IN STEEL		COLLETS FOR MAX Ø [mm]	COLLET TYPE	MAX SPEED [rpm]	WEIGHT EXCL. ADAPTOR [kg]
	DRILLING Ø [mm]	TAPPING [M-threads]				
VH 043P	5	M3	5	ER8	4 000	1.4
MBK-6V3	6	M5	6.3	60-62	5 000	1.4
MBKV-603	6	M5	6.3	60-62	4 000	4.5
VH 063P	7	M5	8	ER11	4 000	2.3
MBKV-803	8	M6	8.5	80-82	4 000	5.4
VH 083P	10	M6	12	ER16	4 000	3.4
VH 103P	12	M8	12	ER16	3 500	4.9
MBKV-1303	13	M10	14	130-132	2 500	9.0
MBKV-1403	13	M10	16	TR16	2 500	9.2
VH 133P	14	M12	15	ER20	3 000	8.3
VH 183D	20	M14	-	TR28	2 500	12.0

Dimensions

MODEL	A MIN SPINDLE SPACING		B MAX SPINDLE SPACING		C SHORTER SIDE	D LONGER SIDE
	ø	CC	ø	CC		
	VH 043P	18.5	16	78.5	68	86
MBK-6V3	21	18.5	71	61.5	ø92	
MBKV-603	30	26	122	105	152	160
VH 063P	27	23.5	103	89	113	119
MBKV-803	33	29	133	115	162	170
VH 083P	36	32	120	104	134	142
VH 103P	40	35	132	115	148	157
MBKV-1303	47	41	159	138	200	210
MBKV-1403	47	41	159	138	200	210
VH 133P	51	44,5	167	144	184	195
VH 183D	59	52	191	165	216	229

4-SPINDLE HEADS



Specifications

MODEL	MAX CAPACITY IN STEEL		COLLETS FOR MAX \varnothing	COLLET TYPE	MAX SPEED [rpm]	WEIGHT EXCL. ADAPTOR [kg]
	DRILLING \varnothing [mm]	TAPPING [M-threads]				
VH 044P	5	M3	5	ER8	4 000	1.9
MBK-6V4*	6	M5	6.3	60-62	5 000	1.9
MBKV-604	6	M5	6.3	60-62	4 000	5.7
VH 064P	7	M5	8	ER11	4 000	3.1
MBKV-804	8	M6	8.5	80-82	4 000	7.4
VH 084P	10	M6	12	ER16	4 000	4.6
VH 104P	12	M8	12	ER16	3 500	7.2
MBKV-1304**	13	M10	14	130-132	2 500	12.1
MBKV-1404**	13	M10	-	TR16	2 500	12.3
VH 134P	14	M12	15	ER20	3 000	10.8
VH184D	20	M14	-	TR28	2 500	15.8

*Gear ratio 1:1.45, ** Gear ratio 1:0.8, All others 1:1

Dimensions

MODEL	A MIN SPINDLE SPACING		B MAX SPINDLE SPACING		C SIDE
	\varnothing	CC	\varnothing	CC	
VH 044P	29.5	21	89.5	63	91
MBK-6V4	30	21.5	80	56,5	\varnothing 104
MBKV-604	46	33	138	97,5	170
VH 064P	41	29	117	82.5	119
MBKV-804	52	37	152	107	190
VH 084P	53.5	38	137.5	97	142
VH 104P	60	42.5	152	107	158
MBKV-1304	67	47.5	179	126	230
MBKV-1404	67	47.5	179	126	230
VH 134P	75	53	191	135	196
VH 184D	86	61	218	154	230

On www.e2systems.com you can find more information as well as the same information as above in imperial units. When requesting a quote or ordering, please state: **Model and Collet size.**

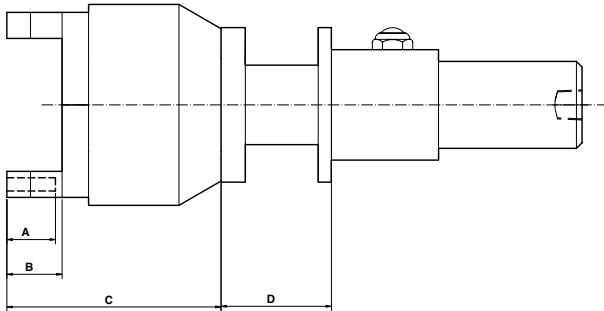
MULTI-SPINDLE HEADS

DIMENSIONS FOR E2 UNITS WITH MULTI-SPINDLE HEADS

Below are specifications of the feasible head and unit combinations for drilling and tapping. Please also check out www.e2systems.com for CAD drawings and models of units with multi-spindle heads.

BE 22 SK and BE 33 SK

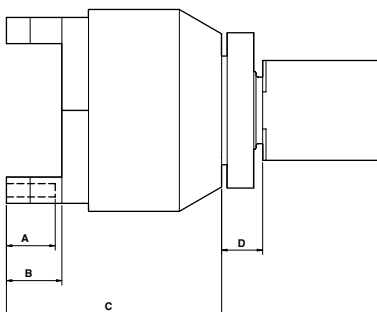
Dimensions [mm]				
MODEL	A	B	C	D
MBKV-402	20	35	117	53
VH 042P / 043P / 043LP / 044P	22	25	97	50
MBK-6V2	21	56	117	53
MBK-6V3 / 6V4	21	56	121	53
MBKV-6VR3	21	56	137	53
VH 062P / 063P / 063LP / 064P	25	34	136	50
VH 082P / 083P / 083LP / 084P	28	40	148	50
MBKV 602 / 603 / R603 / 604	21	35	127	53



ADAPTOR WEIGHT 0.3 KG

BE(F) 22

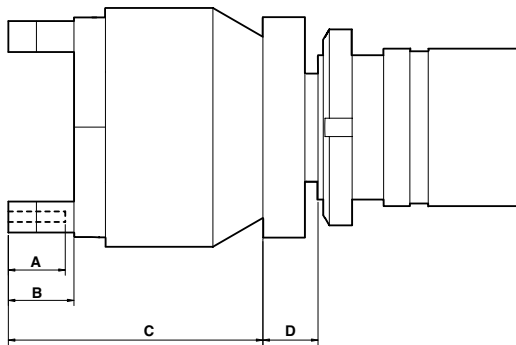
Dimensions [mm]				
MODEL	A	B	C	D
MBKV-402	20	35	117	13
VH 042P / 043P / 043LP / 044P	22	25	97	13
MBK-6V2	21	56	117	13
MBK-6V3 / 6V4	21	56	121	20
MBKV-6VR3	21	56	137	20
VH 062P / 063P / 063LP / 064P	25	34	136	14



ADAPTOR WEIGHT 0.2 KG

BE 33

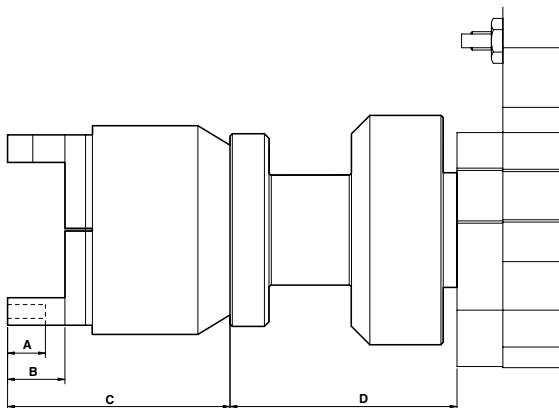
Dimensions [mm]				
MODEL	A	B	C	D
MBKV-402	20	35	117	13
VH 042P / 043P / 043LP / 044P	22	25	97	13
MBK-6V2	21	56	117	13
MBK-6V3 / 6V4	21	56	121	20
MBKV-6VR3	21	56	137	20
MBKV-602 / 603 / R 603 / 604	21	35	127	13
VH 062P / 063P / 063LP / 064P	25	34	136	14
VH 082P / 083P / 083LP / 084P	28	40	148	14



ADAPTOR WEIGHT 0.5–1.5 KG

BE 48 and BEG 48

Dimensions [mm]				
MODEL	A	B	C	D
MBKV-402	20	35	117	95
VH 042P / 043P / 043LP / 044P	22	25	97	98
MBK-6V2	21	56	117	91
MBK-6V3 / 6V4	21	56	121	98
MBK-6VR3	21	56	137	98
MBKV-602 / 603 / R603 / 604	21	35	127	98
VH 062P / 063P / 063LP / 064P	25	34	136	98
MBKV-802 / 803 / R 803 / 804	34	40	144	107
VH 082P / 083P / 083LP / 084P	28	40	148	98
VH 102P / 103P / 103LP / 104P	28	40	162	104
MBKV-1002	27	35	163	107



ADAPTOR WEIGHT 1.2 KG

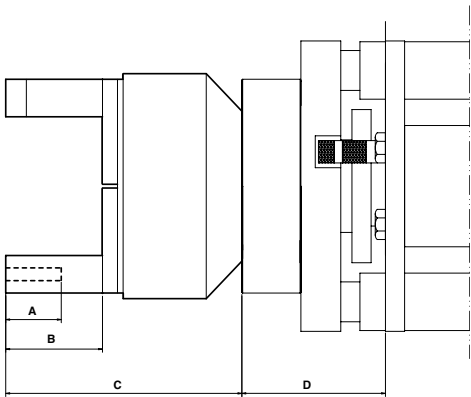
On www.e2systems.com you can find more information as well as the same information as above in imperial units. When requesting a quote or ordering, please state: **Model and Collet size.**

BE 55 and BEG 55

Dimensions

[mm]

MODEL	A	B	C	D
MBK-6V2	21	56	117	63
MBK-6V3 / 6V4	21	56	121	74
MBK-6VR3	21	56	137	60
MBKV-602 / 603 / R 603 / 604	21	35	127	70
VH 062P / 063P / 063LP / 064P	25	34	136	63
MBKV-802 / 803 / R 803 / 804	34	40	144	72
VH 082P / 083P / 083LP / 084P	28	40	148	63
MBKV-1002	27	35	163	86
VH 102P / 103P / 103LP / 104P	28	40	162	68
MBKV-1302	28-49	55	174	72
MBKV-1302S / 1303 / R1303 / 1304	20-49	55	174	79
VH 132P / 133P / 133LP / 134P	28	46	183	68
MBKV-1402 / 1402S / 1403 / R1403 / 1404	-	94	211	79
VH 182 / 183 / 183L / 184	-	94	225	68



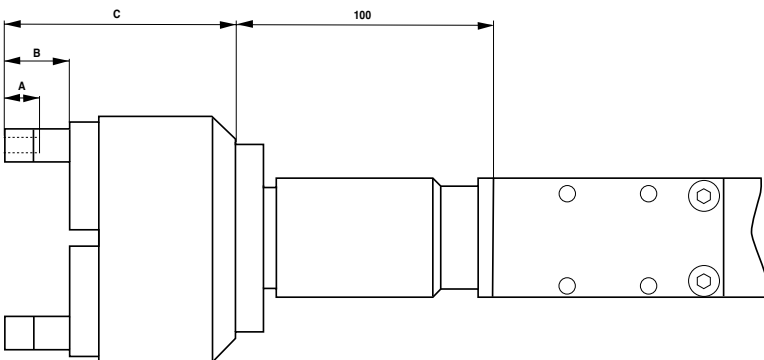
ADAPTOR WEIGHT 3.1 KG

LS 22

Dimensions

[mm]

MODEL	A	B	C
MBKV-402	20	35	117
VH 042	22	25	97
MBK-6V2	21	56	117



ADAPTOR WEIGHT 1.1 KG

On www.e2systems.com you can find more information as well as the same information as above in imperial units. When requesting a quote or ordering, please state: **Model and Collet size.**