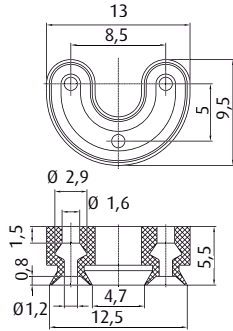


Vacuum cups by size | Ring and segment vacuum cups

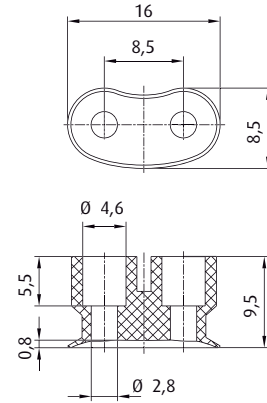
∅ 13 - 24 mm



Item no.
107.013.095._*

Material
SI (tr)

0.7 mm

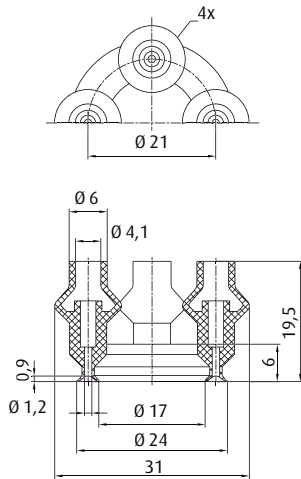


Item no.
107.017.093._*

Material
SI (tr)

0.2 mm

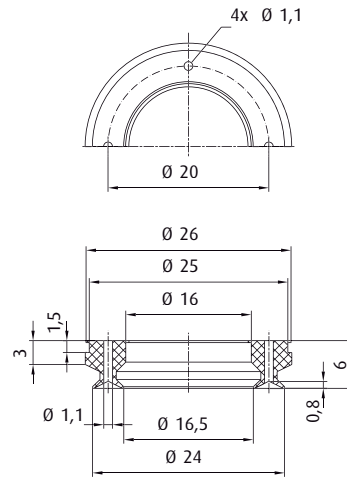
Connection	see page
270.010 M5-male	411



Item no.
107.024.060._*

Material
SI (tr)

0.8 + 1.4 mm



Item no.
107.024.061._*

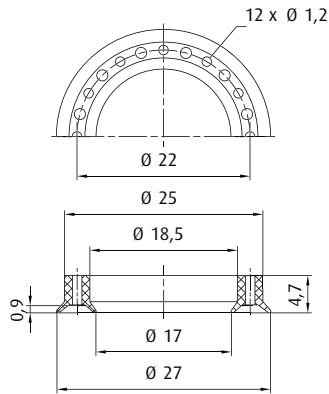
Material
SI (tr)

0.8 mm

* When ordering please add the appropriate material code to item no. You will find it in the foldout.
Average holding forces for vacuum cups you will find on page 760

Vacuum cups by size | Ring and segment vacuum cups

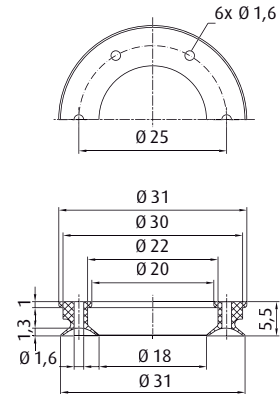
∅ 27 - 33 mm



Item no.
107.027.121._*

Material
SI (tr)

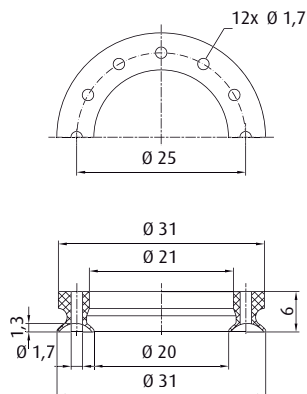
0.5 mm



Item no.
107.031.079._*

Material
SI (bl)

1.3 mm

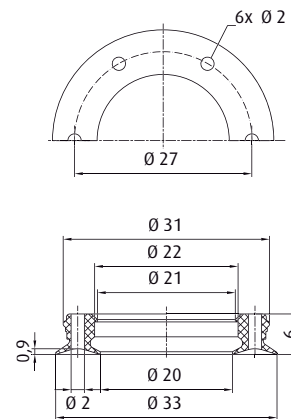


BESTSELLER

Item no.
107.031.091._*

Material
SI (tr)

1.3 mm



Item no.
107.033.046._*


Material
SI-AS (sw)

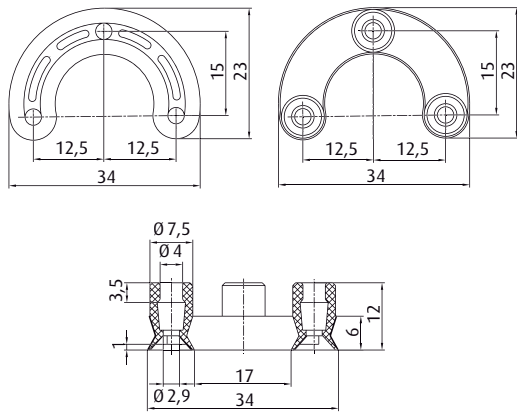
0.5 mm

* When ordering please add the appropriate material code to item no. You will find it in the foldout.
Average holding forces for vacuum cups you will find on page 760

Vacuum cups by size | Ring and segment vacuum cups


∅ 33 - 114 mm


	Connection	see page
270.134	M5-male	409
270.104	M6-male	413
270.033	G1/8-male	416
270.478	G1/8-female	421

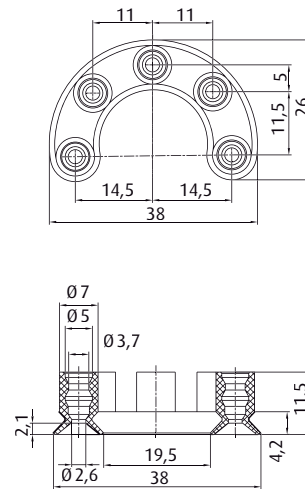


Item no.
107.033.047.*

Material
SI (tr)


 1.2 mm

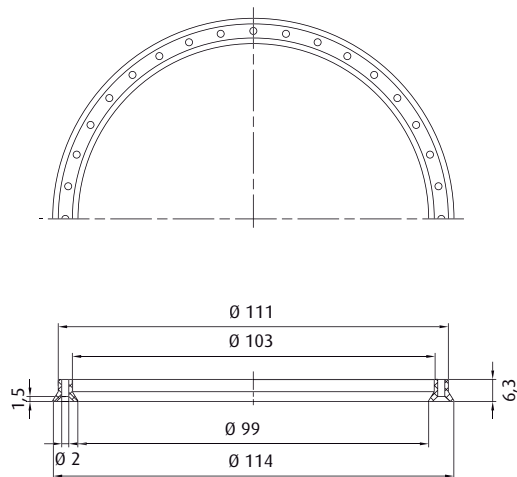
	Connection	see page
270.399	M5-male	410



Item no.
107.038.119.*

Material
SI (tr)


 2 mm



PTFE COATED

Item no.
107.114.118.*

Material
SI (tr)

 0.5 mm

* When ordering please add the appropriate material code to item no. You will find it in the foldout.
Average holding forces for vacuum cups you will find on page 760