



## Vacuum tanks 5 - 60 liters



### Product Description

- > Storage for compressed air, vacuum and non-aggressive liquids
- > Energy saving assembly of compressed air and vacuum
- > For compressed air / vacuum networks with fluctuating demand
- > For preventing frequent startup of the compressor system
- > To cover high demands short-term
- > As supplement to screw / piston compressors, rotary compressors or vacuum pumps

### Notes

- > 92.001: Two fittings in line with G1/2-female with 90° offset  
One fitting per front face with G1/4-female
- > 92.002 to 92.004: One fitting in line with G1/2-female  
2 x one fitting with G3/4-female and distance 120 mm and 1 x one fitting with G3/4-female on the front faces

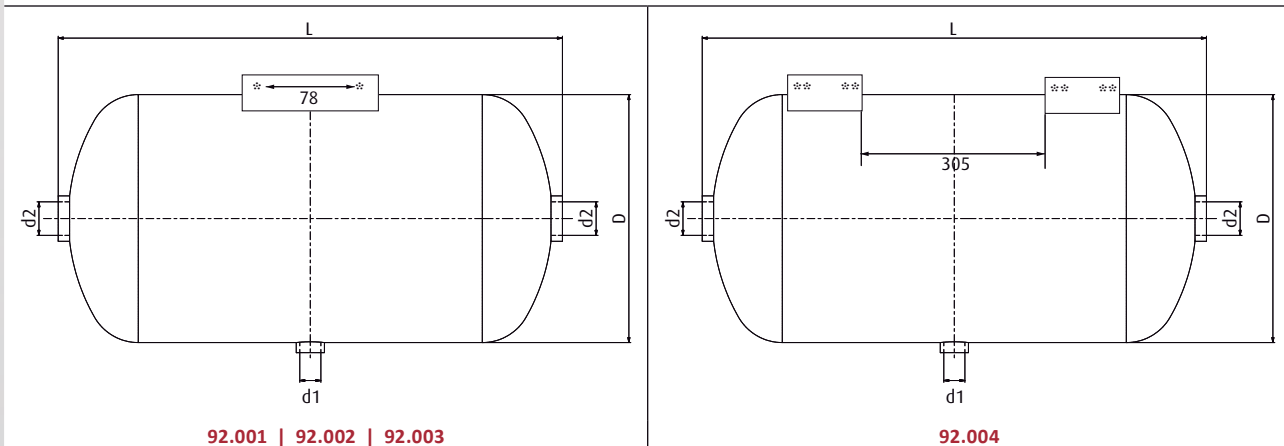
### Technical data

Item no.	Safety tank volume [l]	Operating pressure [bar]	Medium	Design	Weight [kg]
92.001	5	0 - 11	Compressed air / vacuum	Aluminium	1.7
92.002	10	0 - 11	Compressed air / vacuum	Aluminium	2.4
92.003	20	0 - 11	Compressed air / vacuum	Aluminium	3.7
92.004	60	0 - 11	Compressed air / vacuum	Aluminium	9.3

### Dimensions

d1	d2	D [mm]	L [mm]
G1/2	G3/4	152	356
G1/2	G3/4	206	355
G1/2	G3/4	245	500
G1/2	G3/4	276	1,111

### Dimensions



\* = Two pairs of fixing bores, each with 2x M12x14    \*\* = Two pairs of fixing bores, each with 4x M12x14



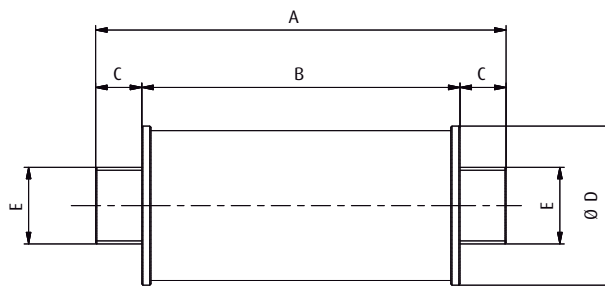
### Additional silencer for side channel blowers



#### Product Description

- > Silencer with direct opening
- > Suitable for "processing" of the exhaust air: e.g. ventilation or heating of halls or use as silencer and release into the open

#### Dimensions



Item no.	E	A [mm]	B [mm]	C [mm]	Ø D [mm]
72.038	G1	178	138	20	69
72.039	G1 1/4	242	138	52	69
72.040	G1 1/2	232	168	32	80
72.041	G2	262	198	32	89
72.042	G2 1/2	262	198	32	100



### Electro-pneumatic reversing valves for side channel blowers



#### Product Description

- > Operation of a side channel blower as a vacuum pump for suction or compressor for blow-off
- > Blow-off volume flow is directed to the vacuum cup / load, without reversing the direction of rotation of the blower
- > Three setting positions: Suction, blow-off, neutral
- > Working principle: Rotation of a cylinder, which is operated by an electrical motor-driven actuator

#### Notes

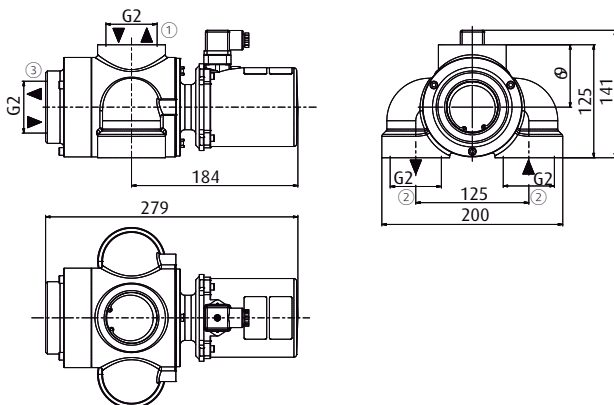
Please note for the neutral position (0°):

- > If operation with closed suction inlets cannot be excluded, a vacuum limiting valve (safety valve) must be installed before the suction inlet

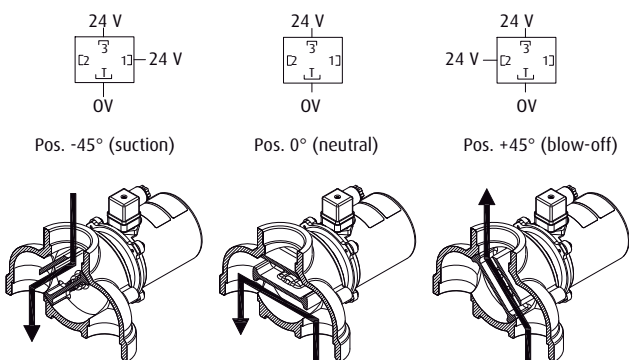
#### Technical data

Item no.	Suction power [m <sup>3</sup> /h]	Power supply [VDC]	Power consumption [W]	Duty ratio [%]	Direction of rotation [°]	Mean control time [s]	Minimum time interval between successive cycles [s]	Protection class	Weight [kg]
33.074	300	24	10	100	-45 / 0 / +45	0.5	0.1	IP55	3.2

#### Dimensions



#### Wiring diagrams



① = System connection    ② = Side channel blower connection    ③ = Air inlet / outlet