

PNEUMATIC SYSTEM

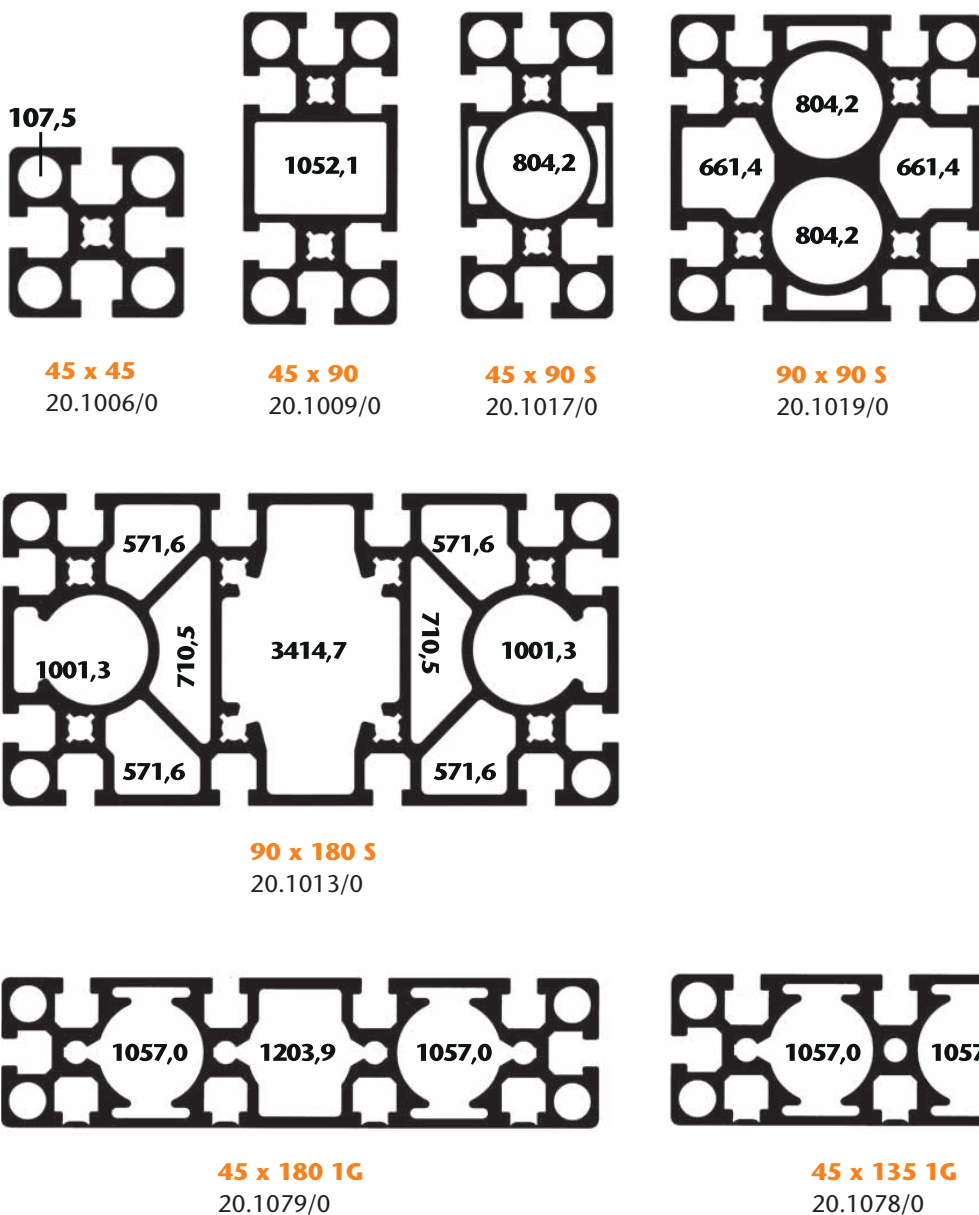
Optically attractive and economical solutions are possible with simultaneous use of the construction profiles as an air duct. The MiniTec standard profiles are particularly well suited for compressed air guidance. Commercially available connections can be used without special connection components.

All standard profiles with round corner holes can be used as compressed air lines. Bore Ø 11.7 can be drilled to G 1/4 to accommodate pneumatic connections or screw plugs. Air extraction at any point.

All MiniTec standard profiles can be used as a single or multi-chamber system. Connections are possible at any point. Maximum pressure for round chambers (Ø 11.7) 20 bar, otherwise max. 8 bar.

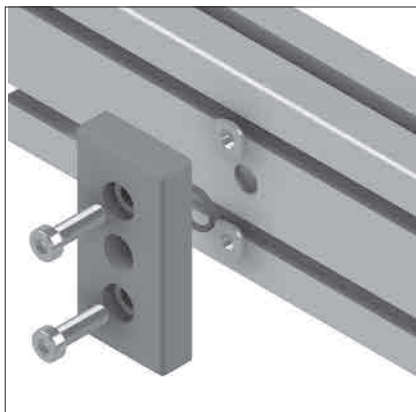
Usable cavities for compressed air ducts

All area information in mm²

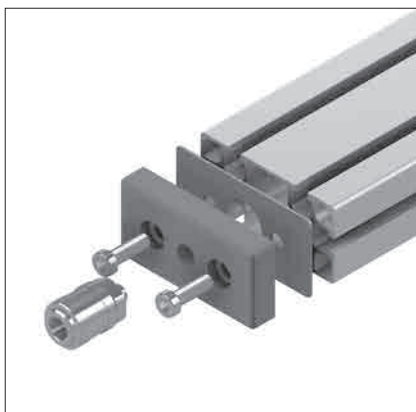


PNEUMATIC SYSTEM

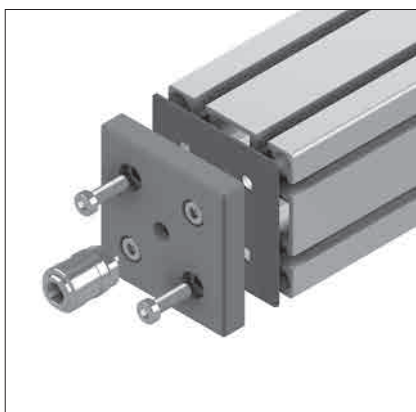
PNEUMATIC-PLATE 45, 45 x 90 and 90



Thread	WEIGHT	Part no.
G 1/8"	0,170 kg	24.1107/0
G 1/4"	0,168 kg	24.1107/2
G 3/8"	0,165 kg	24.1107/3



Thread	WEIGHT	Part no.
G 1/8"	0,181 kg	24.1105/0
G 1/4"	0,178 kg	24.1105/2
G 3/8"	0,174 kg	24.1105/3



Thread	WEIGHT	Part no.
G 1/8"	0,434 kg	24.1106/0
G 1/4"	0,429 kg	24.1106/2
G 3/8"	0,421 kg	24.1106/3

PNEUMATIC-PLATE 45

Technical Data/Items Supplied

- Die-cast aluminum, powder-coated grey
- 1x O-Ring
- with fastening material

Application

- Side connection for compressed air supply or removal on profiles 45 x 90 and 90 x 90

Assembly

- mount with fastening material of items supplied
- Insert bore Ø 12 mm in the center of the profile

PNEUMATIC-PLATE 45 X 90

Technical Data/Items Supplied

- Die-cast aluminum, powder-coated grey
- with sealing plate made of NBR
- with fastening material

Application

- Closure of the hollow chamber ends of profiles 45 x 90 for connection of pneumatic connections

Assembly

- Apply sealing plate
- with fastening material from items supplied screw on 2 central holes Ø 7.5 mm (tightening torque 12 Nm)

PNEUMATIC PLATE 90

Technical Data/Items Supplied

- Die-cast aluminum, powder-coated grey
- with sealing plate made of NBR
- with fastening material

Application

- Closure of the hollow chamber ends of profiles 90 x 90 for connection of pneumatic connections

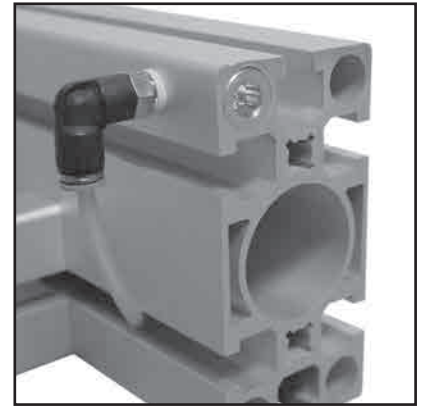
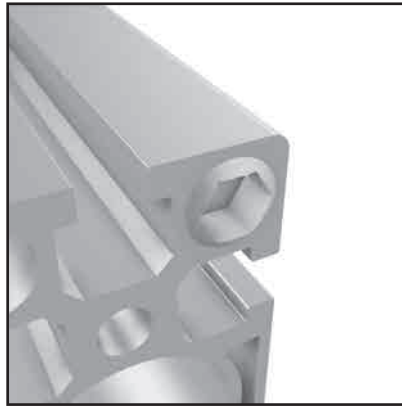
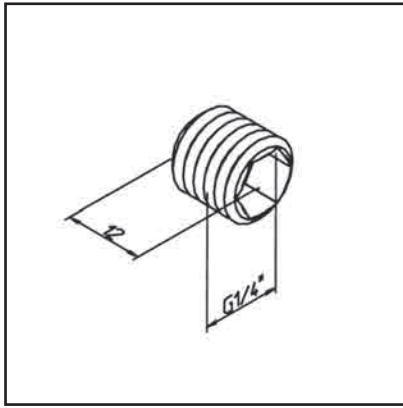
Mounting

- Apply sealing plate
- with fastening material from scope of supply screw on 4 central holes Ø 7.5 mm (tightening torque 12 Nm)

PLUG G1/4"

Part no.

24.1104/0

**TECHN. DATA / ITEMS SUPPLIED**

- Brass
- Weight = 0.005 kg/piece

APPLICATIONS

- Closure for profile chambers \varnothing 11,7 mm

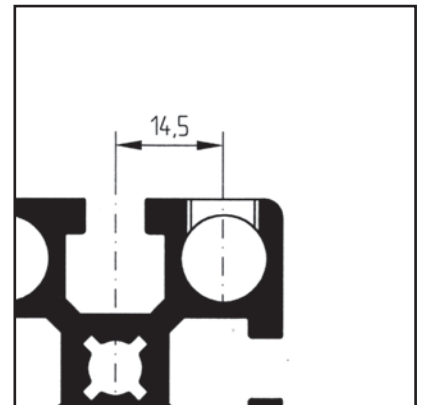
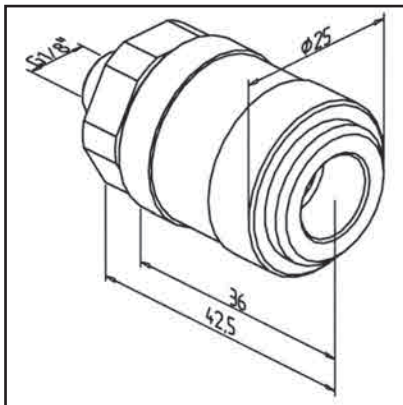
ASSEMBLY

- Cut Thread G 1/4" in central hole d 11.7.
- Screw in the plug by using sealing tape

QUICK CONNECTOR 1/8

Part no.

24.1109/0

**TECHN. DATA / ITEMS SUPPLIED**

- Brass, nickel-plated
- NW 7 mm
- Connecting thread G 1/8", SW 22
- Weight = 0.087 kg/piece

APPLICATIONS

- To connect directly to the profile panel or frontally at the bore \varnothing 11.7

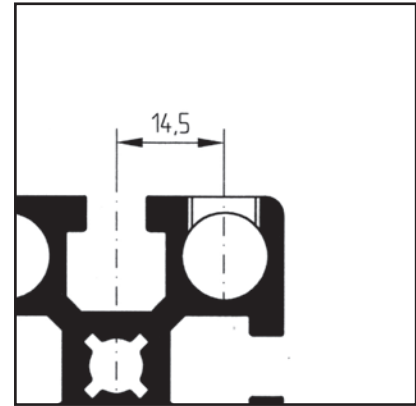
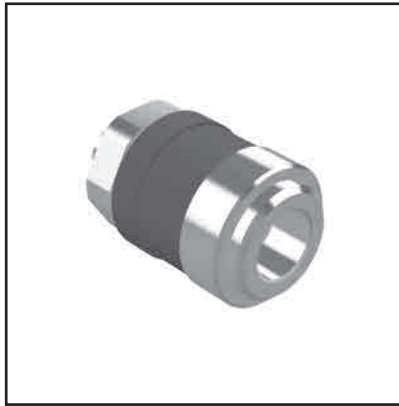
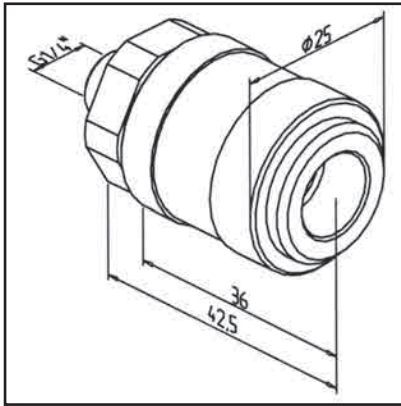
ASSEMBLY

- Thread G 1/8 in profile face, distance thread centre from centre of profile groove: 14.5 mm

QUICK CONNECTOR 1/4

Part no.

24.1110/0



TECHN. DATA / ITEMS SUPPLIED

- Brass, nickel-plated
- NW 7 mm
- Connecting thread G 1/4", SW 22
- Weight = 0.087 kg/piece

APPLICATIONS

- To connect directly to the profile panel or frontally at the bore \varnothing 11.7

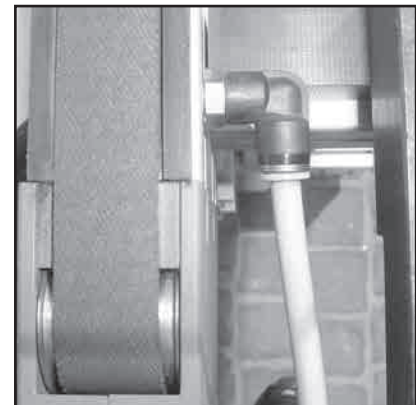
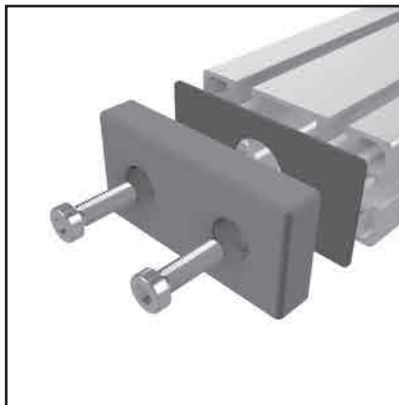
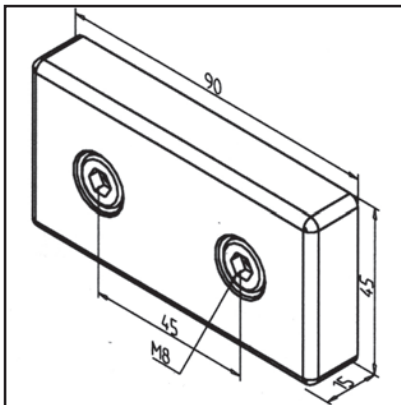
ASSEMBLY

- Thread G 1/4 in profile face, distance thread centre from centre of profile groove: 14.5 mm

PNEUMATIC END PLATE 45 X 90

Part no.

24.1105/7



TECHN. DATA / ITEMS SUPPLIED

- Aluminium, Pressure die-casting, powder-coated, grey
- With sealing plate of NBR, black
- Fastening kit
- Weight = 0.180 kg/piece

APPLICATIONS

- Closing of chamber ends of profiles 45 x 90

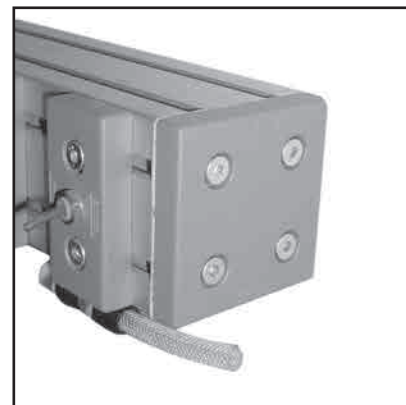
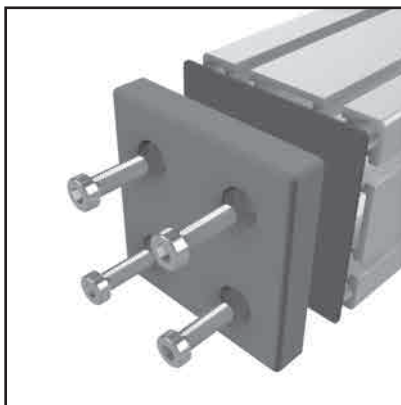
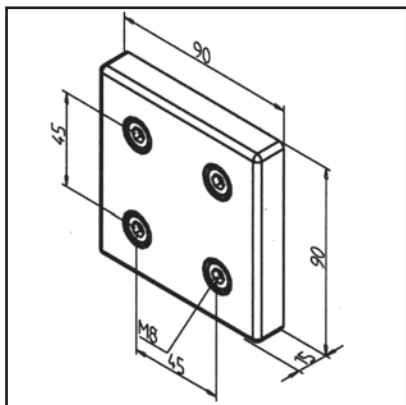
ASSEMBLY

- Insert sealing plate
- Screw in with fastening material from items supplied.

PNEUMATIC END PLATE 90 X 90

Part no.

24.1106/7

**TECHN. DATA / ITEMS SUPPLIED**

- Aluminium, Pressure die-casting, powder-coated, grey
- With sealing plate of NBR, black
- Fastening kit
- Weight = 0.430 kg/piece

APPLICATIONS

- Closing of chambers of profiles 90 x 90 for connection of pneumatic couplings

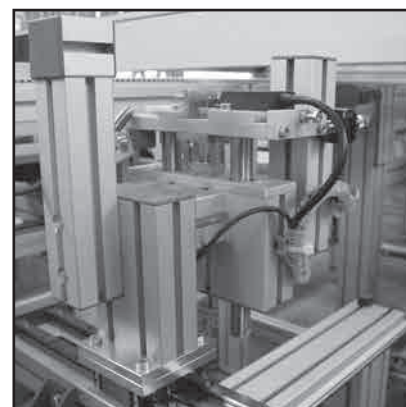
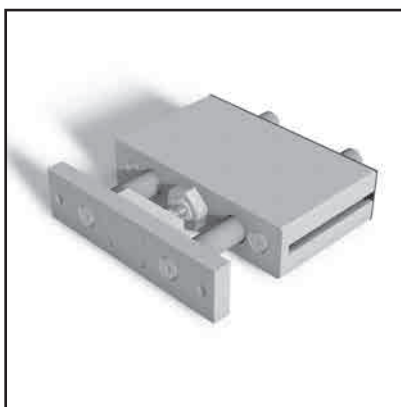
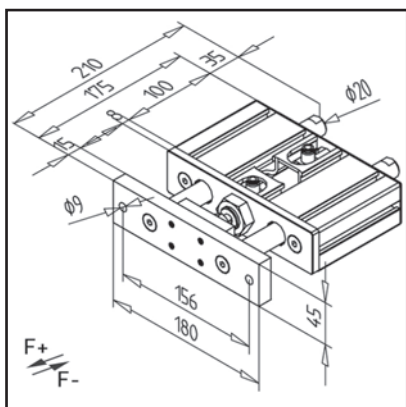
ASSEMBLY

- Insert sealing plate
- Screw in with fastening material from items supplied.

PNEUMATIC LIFTING UNIT 15

Part no.

24.1201/0

**TECHN. DATA / ITEMS SUPPLIED**

- Incorporated into profile 45 x 180
- Overall cylinder size \varnothing 25 mm
- Guide shafts \varnothing 20 mm
- Fully assembled with double acting pneumatic cylinder
- F+ at 6 bar = 256 N
- F- at 6 bar = 220 N
- Stroke = 15 mm
- Weight = 3.405 kg/piece

APPLICATIONS

- Lifting and lowering of loads
- Attachment for grips or similar
- Positioning of parts

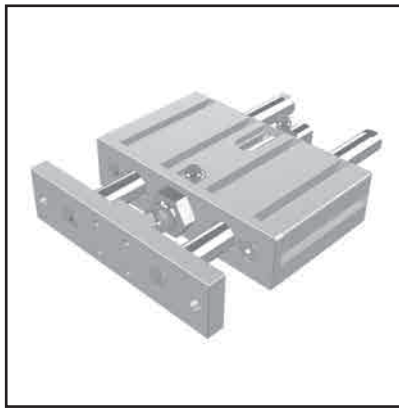
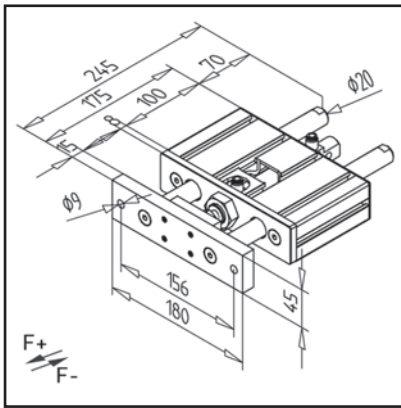
ASSEMBLY

- with mounting angle bracket on profile construction
- Other stroke lengths on request

PNEUMATIC LIFTING UNIT 50

Part no.

24.1205/0



TECHN. DATA / ITEMS SUPPLIED

- Incorporated into profile 45 x 180
- Overall cylinder size \varnothing 25 mm
- Guide shafts \varnothing 20 mm
- Fully assembled with double acting pneumatic cylinder
- F+ at 6 bar = 265 N
- F- at 6 bar = 220 N
- Stroke = 50 mm
- Weight = 3.452 kg/piece

APPLICATIONS

- Lifting and lowering of loads
- Attachment for grips or similar
- Positioning of parts

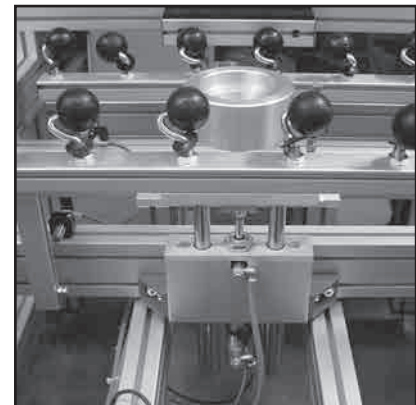
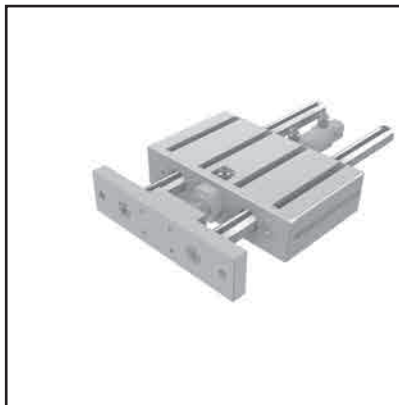
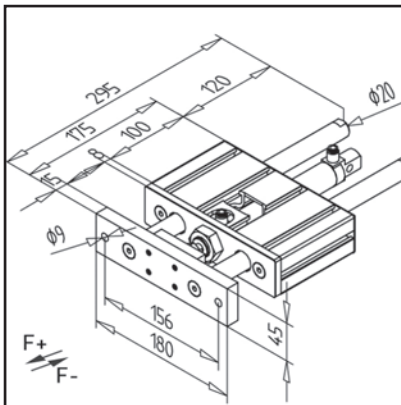
ASSEMBLY

- with mounting angle bracket on profile construction
- Other stroke lengths on request

PNEUMATIC LIFTING UNIT 100

Part no.

24.1210/0



TECHN. DATA / ITEMS SUPPLIED

- Incorporated into profile 45 x 180
- Overall cylinder size \varnothing 25 mm
- Guide shafts \varnothing 20 mm
- Fully assembled with double acting pneumatic cylinder
- F+ at 6 bar = 265 N
- F- at 6 bar = 220 N
- Stroke = 100 mm
- Weight = 3.507 kg/piece

APPLICATIONS

- Lifting and lowering of loads
- Attachment for grips or similar
- Positioning of parts

ASSEMBLY

- with mounting angle bracket on profile construction
- Other stroke lengths on request