

NFK Series Screwfeeders



NFK Nxx

The new Kolver feeders, model NFK-Nxx (xx stands for the screw size) are supplied with interchangeable spacers between the rails (spacer size: 1,3 to 5,3 mm). You can also combine spacers to reach the desired rail width. Dimensional drawings and complete up-to-date info available on our website.

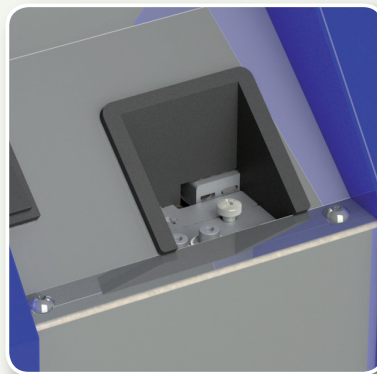
The new NFK UNI can be used with any (non-countersunk) screw with diameter 1,4 - 5,0 mm. NFK..RS delivers one screw at a time to a specific position so that one single screw can be easily picked up when using an autcatcher or suction head. A trimmer on the side panel allows to adjust how fast each screw is supplied. Available for screws with shank diameter from 1,2 mm up to 5 mm.

The whole NKF Screw Feeder Series can handle max. 20 mm long screws.

An optional cover is available in order to avoid screws falling inside the NFK..RS screw feeder.



NFK..RS



Optional cover NFK..RS

Model	Code	Max shank Ø mm
NFK UNI	014705	Any diametre inbetween 1,4 - 5,0 mm
NFK N14	014514	1,4
NFK N17	014517	1,7
NFK N20	014520	2,0
NFK N23	014523	2,3
NFK N26	014526	2,6
NFK N30	014530	3,0
NFK N40	014540	4,0
NFK N50	014550	5,0

Model	Code	Max shank Ø mm
NFK N12/RS	014512/RS	1,2
NFK N14/RS	014514/RS	1,4
NFK N17/RS	014517/RS	1,7
NFK N20/RS	014520/RS	2,0
NFK N23/RS	014523/RS	2,3
NFK N26/RS	014526/RS	2,6
NFK N30/RS	014530/RS	3,0
NFK N40/RS	014540/RS	4,0
NFK N50/RS	014550/RS	5,0