

# FIPA

**proudly presents:**

## The new FIPA sprue gripper range



- New 90, 100 and 130 series
- Clear FIPA brand identity
- Harmonized FIPA series & model codes
- 100% FIPA quality guaranteed: robust & reliable
- Broad range of models to meet all your application needs in the plastics industry

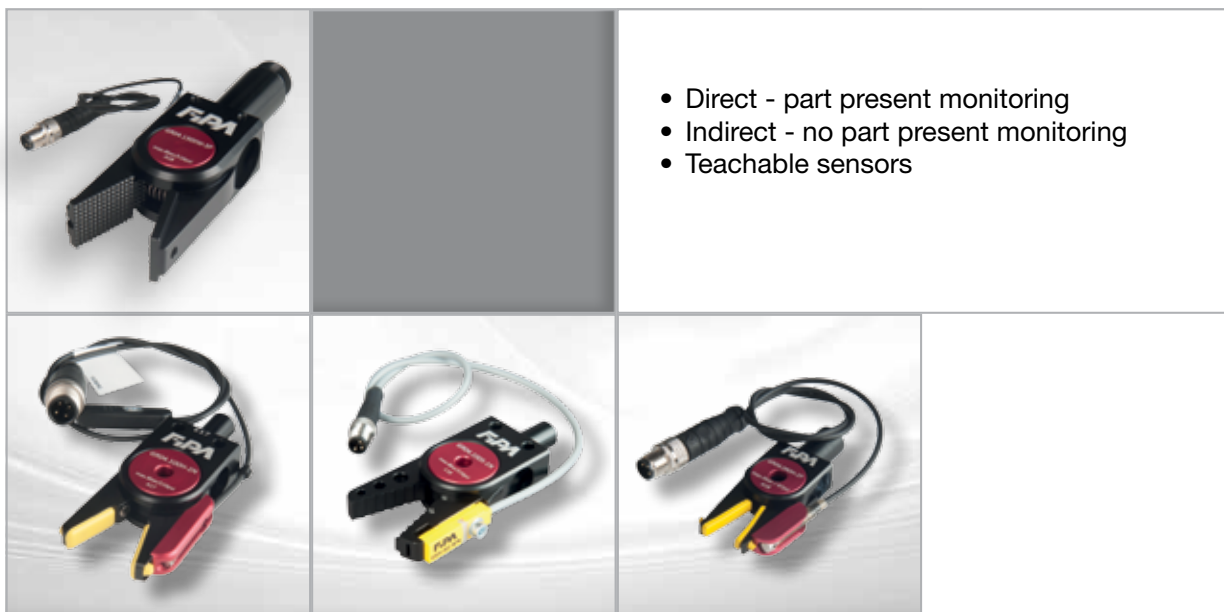
**Solutions for Plastics**

**FIPA**  
*challenge accepted*

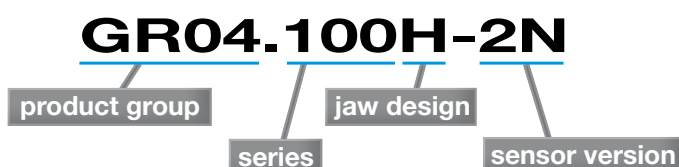
## HNBR SERIES: HIGH TEMPERATURE RESISTANCE & SOFT CONTACT



## SENSING SERIES: PART PRESENT MONITORING PNP & NPN



## NEW NOMENCLATURE STRUCTURE



- Valid for series 60, 80, 90, 100, 130
- Jaw design: one or more letters
- Sensor version: „-“, followed by the number defining the sensor version, followed by „P“ for PNP or „N“ for NPN

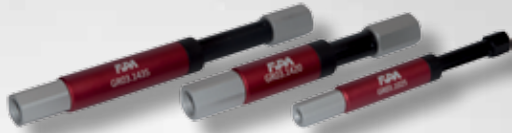
## GRIPPER SERIES: OVERVIEW AND ARTICLE NUMBERS

New	Item no.	Old Item no.	Description
	GR04.090	GR04.090	Series 90 Sprue grippers
<b>NEW</b>	GR04.090-1N		Series 90 Sprue grippers, direct sensor monitoring NPN
<b>NEW</b>	GR04.090-1P		Series 90 Sprue grippers, direct sensor monitoring PNP
	GR04.090-3P	GR04.091	Series 90 Sprue grippers, indirect sensor monitoring PNP
<b>NEW</b>	GR04.090H		Series 90 Sprue grippers
<b>NEW</b>	GR04.090H-2N		Series 90 Sprue grippers, indirect sensor monitoring NPN, teachable
<b>NEW</b>	GR04.090H-2P		Series 90 Sprue grippers, indirect sensor monitoring PNP, teachable
	GR04.100	GR04.100	Series 100 Sprue grippers
	GR04.100-1N	GR04.101A/NPN	Series 100 Sprue grippers, direct sensor monitoring NPN
	GR04.100-1P	GR04.101A	Series 100 Sprue grippers, direct sensor monitoring PNP
<b>NEW</b>	GR04.100-2N		Series 100 Sprue grippers, indirect sensor monitoring NPN, teachable
<b>NEW</b>	GR04.100-2P		Series 100 Sprue grippers, indirect sensor monitoring PNP, teachable
	GR04.100-3N	GR04.104/NPN	Series 100 Sprue grippers, indirect sensor monitoring NPN
	GR04.100-3P	GR04.104	Series 100 Sprue grippers, indirect sensor monitoring PNP
	GR04.100B	GR04.107	Series 100 Sprue grippers
	GR04.100H	GR04.106	Series 100 Sprue grippers
<b>NEW</b>	GR04.100H-2N		Series 100 Sprue grippers, indirect sensor monitoring NPN, teachable
<b>NEW</b>	GR04.100H-2P		Series 100 Sprue grippers, indirect sensor monitoring PNP, teachable
	GR04.100HNBR	GR04.100-HNBR	Series 100 Sprue grippers
	GR04.100S	GR04.105	Series 100 Sprue grippers
	GR04.100S-1N	GR04.105A/NPN	Series 100 Sprue grippers, direct sensor monitoring NPN
	GR04.100S-1P	GR04.105A	Series 100 Sprue grippers, direct sensor monitoring PNP
	GR04.100U	GR04.103	Series 100 Sprue grippers
	GR04.100XW	GR04.108	Series 100 Sprue grippers
	GR04.102	GR04.102A	Series 102 Sprue grippers
	GR04.130	GR04.131A	Series 130 Sprue grippers
	GR04.130-1N	GR04.131D/NPN	Series 130 Sprue grippers, direct sensor monitoring NPN
	GR04.130-1P	GR04.131D	Series 130 Sprue grippers, direct sensor monitoring PNP
	GR04.130B	GR04.131B	Series 130 Sprue grippers
	GR04.130B-1N	GR04.131E/NPN	Series 130 Sprue grippers, direct sensor monitoring NPN
	GR04.130B-1P	GR04.131E	Series 130 Sprue grippers, direct sensor monitoring PNP
	GR04.130H	GR04.131H	Series 130 Sprue grippers
	GR04.130U	GR04.131C	Series 130 Sprue grippers
	GR04.130XW-3P	GR04.130F	Series 130 Sprue grippers, indirect sensor monitoring PNP

Index	Sensor monitoring
1P	Sensing direct - PNP
1N	Sensing direct - NPN
2P	Sensing teachable - NPN
2N	Sensing teachable - PNP
3P	Sensing indirect - PNP
3N	Sensing indirect - NPN

Index	Jaw design
B	Curved jaw
H	HNBR-pad - replaceable
HNBR	Jaw HNBR-coated
R	Rotating jaw
S	Saw tooth jaw
SXL	Saw tooth jaw extra large
U	Universal - for custom jaws
XW	Extra wide jaw

# FIPA END-OF-ARM-TOOLING ACCESSORIES AT A GLANCE



**Non-rotating internal spring suspensions - smooth body**



**Suspensions with internal spring and threaded connection**



**Standard suspensions with threaded connection**

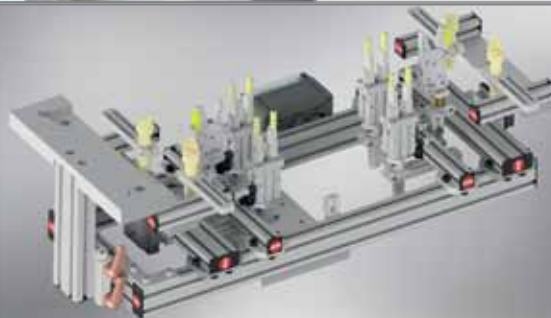


**Non-rotating internal spring suspensions - threaded body**



- FIPA advises you and supplies the gripper components required
- You plan and build the gripper system yourself

- FIPA handles the planning using 3D CAD and supplies all components and detailed assembly instructions
- You assemble the system



- FIPA plans and implements the complete system according to your requirements
- The system is delivered completely assembled and pre-configured

FIPA GmbH

Freisinger Strasse 30

85737 Ismaning / Germany

Phone +49 89 962489-0

Fax +49 89 962489-11

info@fipa.com | www.fipa.com



2018.GR-Grippers